

# unlocking futures in action

## Instructional Model

### Our Vision

Inspiring and equipping hearts, hands and minds for a world of possibilities

### Strategic Intent

1

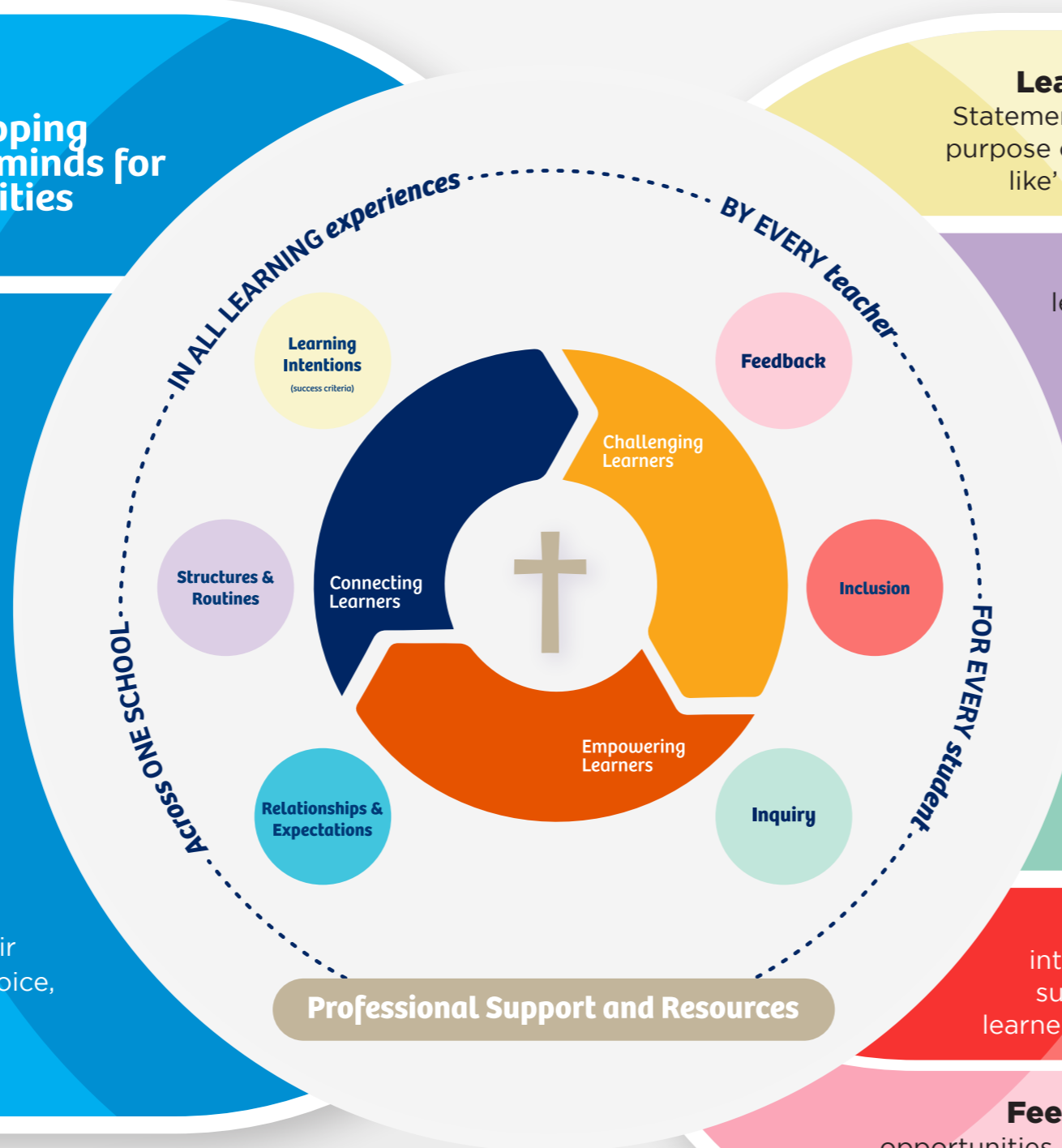
**Connecting Learners** to learning experiences that are collaborative, consistent, connected to communities and grounded in authenticity and relevance

2

**Challenging Learners** to take risks and overcome obstacles through developing and engaging their strengths, interests, and wellbeing strategies

3

**Empowering Learners** to be partners in shaping their learning through voice, choice, and action



### Learning Intentions and Success Criteria:

Statements relating to what students are learning, the purpose of their learning and what achievement 'looks like' are used to challenge and empower students

### Structure and Routines:

A consistent learning structure and set of routines are used to support student engagement, reduce cognitive load and assist the development of self-management, and emotional regulations skills

### Relationships and Expectations:

A safe learning environment is established through modelling respectful relationships and upholding consistent expectations

### Inquiry:

Questions and authentic provocations are used to engage students in constructing knowledge, developing skills, and applying their understanding

### Inclusion:

Strategies, activities, and interventions are selected, adjusted and used to support the engagement and progress of every learner based on their strengths, interest and needs

### Feedback:

Diverse, regular and timely feedback opportunities are provided for students in assisting them to understand their learning performance and the next steps in achieving progress

extraordinary