

July 2025

Dear Parent/Guardian,

The City of Unley, in partnership with Concordia College, have been working to improve safety and access for students and parents/guardians during the busy school drop-off and pick-up times.

As part of this project, a number of parking and traffic improvements were identified and detailed on the next page. The improvements will be implemented in late July / early August 2025. To support these improvements parents/guardians are kindly asked to adhere to the new traffic and parking controls once implemented. Student and road safety is paramount. We appreciate the challenges experienced with the school drop-off and pick-up, and hope the improvements will assist in making the experience less stressful.

As a friendly reminder, please remember the following:

Comply with the 25km/h School Zones: Drivers must not exceed 25km/h at any time of the day or night when a child is in a School Zone. This includes children walking or riding a bike either on the road or footpath. The lower speed limit applies whenever children are in the zone, including weekends and school holidays.

Comply with No Parking signs: You can only stop in a No Parking zone for the immediate purpose of picking up or dropping off passengers or goods. The driver must remain with the vehicle and take no more than 2 minutes. If you need to get out of the car and park for longer than 2 minutes, then please park further away from the school where longer term parking is permitted and walk.

Comply with No Stopping signs and yellow lines: You must not park or stop in a No Stopping area or on a continuous yellow line for any reason.

Do not park across driveways: You must not park across a driveway. Restricting access to driveways is illegal and can inconvenience the property owners.

Our Parking and Regulatory Services team will be out regularly monitoring compliance of traffic and parking controls.

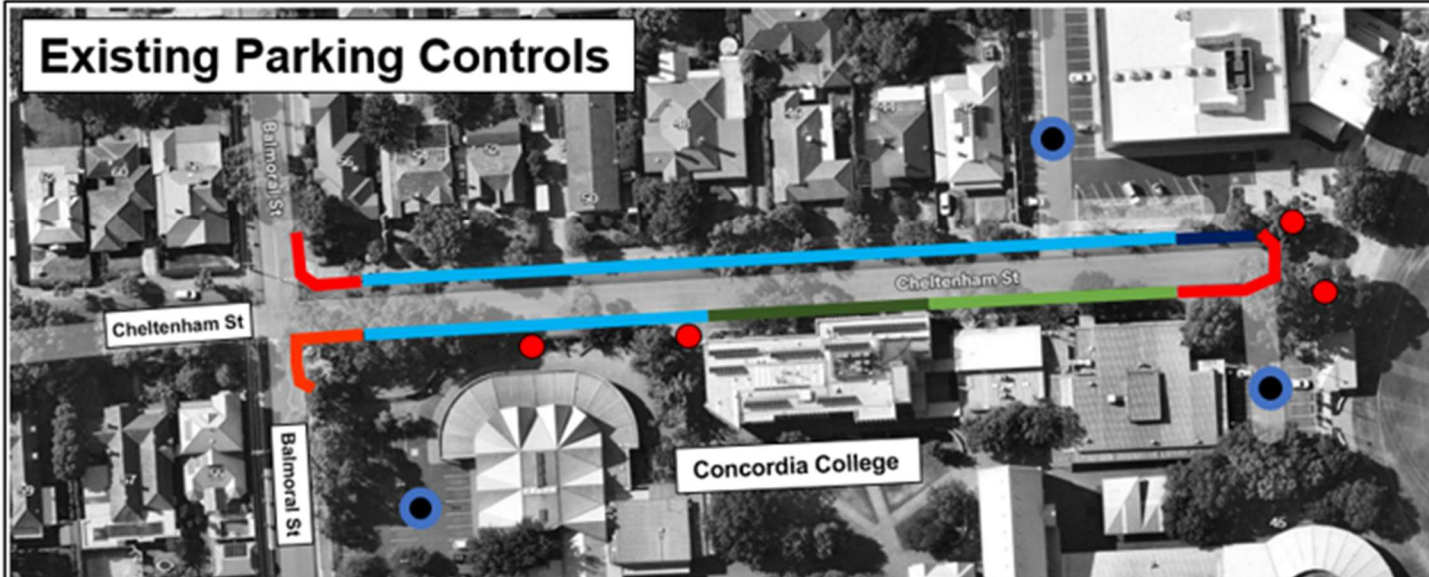
If you require any additional information on the improvements detailed on the next page, please contact us by email at pobox1@unley.sa.gov.au or phone 8372 5111

Yours sincerely,

City of Unley,
in partnership with Concordia College.

CHELTENHAM STREET – New Parking Controls

Existing Parking Controls

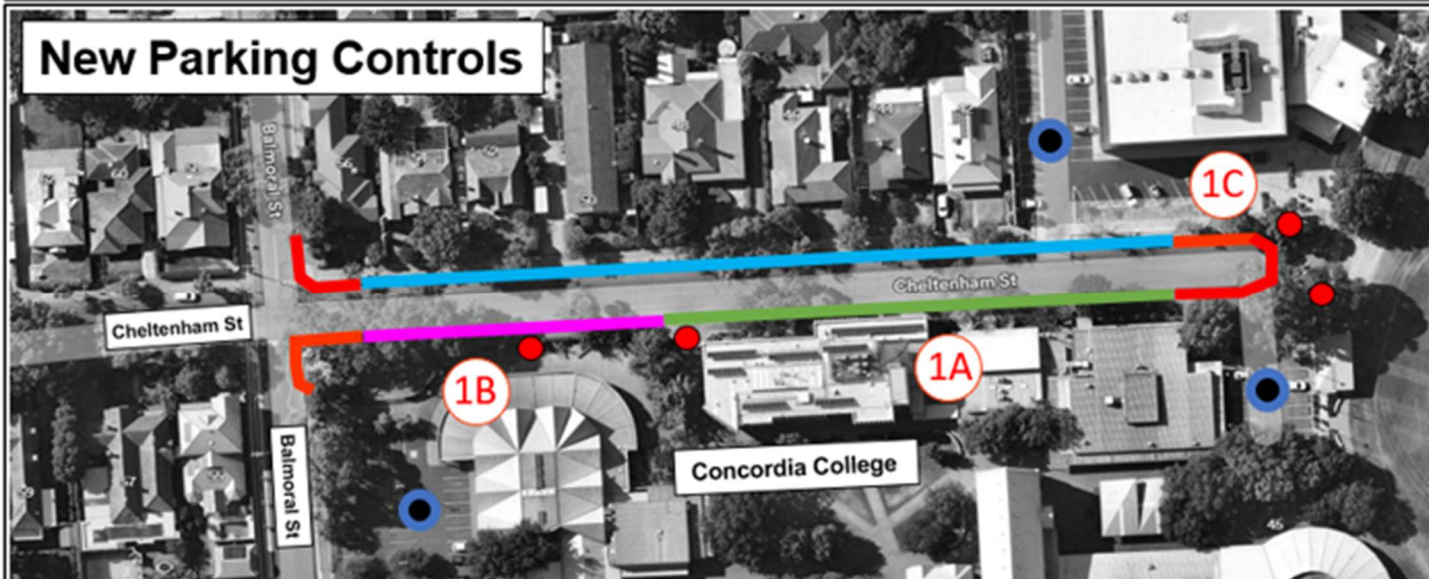


- Unrestricted parking
- No Stopping, 8am-4pm, Mon-Fri, School Days Only
- Bus Zone, 2-4pm, School Days Only
- No Stopping (at all times)
- School Car Park
- Bus Zone, 8am-4pm, Mon-Fri, School Days Only
- School Entrance

Key issues observed:

- **Inconsistent parking restrictions** around the school create confusion for motorists, parents, and guardians, leading to high levels of non-compliant parking.
- **Extensive areas of unrestricted parking** surrounding the school, are used for all-day parking, limiting availability for safe school drop-offs and pick-up's.
- **A high number of school buses park along Cheltenham Street**, with some using no-stopping zones illegally.
- Due to the school's high reliance on vehicle transport, **nearly all on-street parking on Highgate, Winchester, Balmoral, and Cheltenham Streets are fully occupied** during the PM peak period.

New Parking Controls



- Bus Zone, 8am-4pm, Mon-Fri, School Days Only
- No Parking 8-9am, 3-4pm, School Days Only
- Unrestricted parking
- No Stopping (at all times)
- School Car Park
- School Entrance

1A: Modify Existing Bus Zone Operating Times

Extend length of Bus Zone and adjust the operating hours of the existing Bus Zone to 8:00 AM – 4:00 PM, school days only, to avoid confusion, create a more consistent parking control and cater for number of buses.

1B: Install new 'Kiss and Drop' Zone

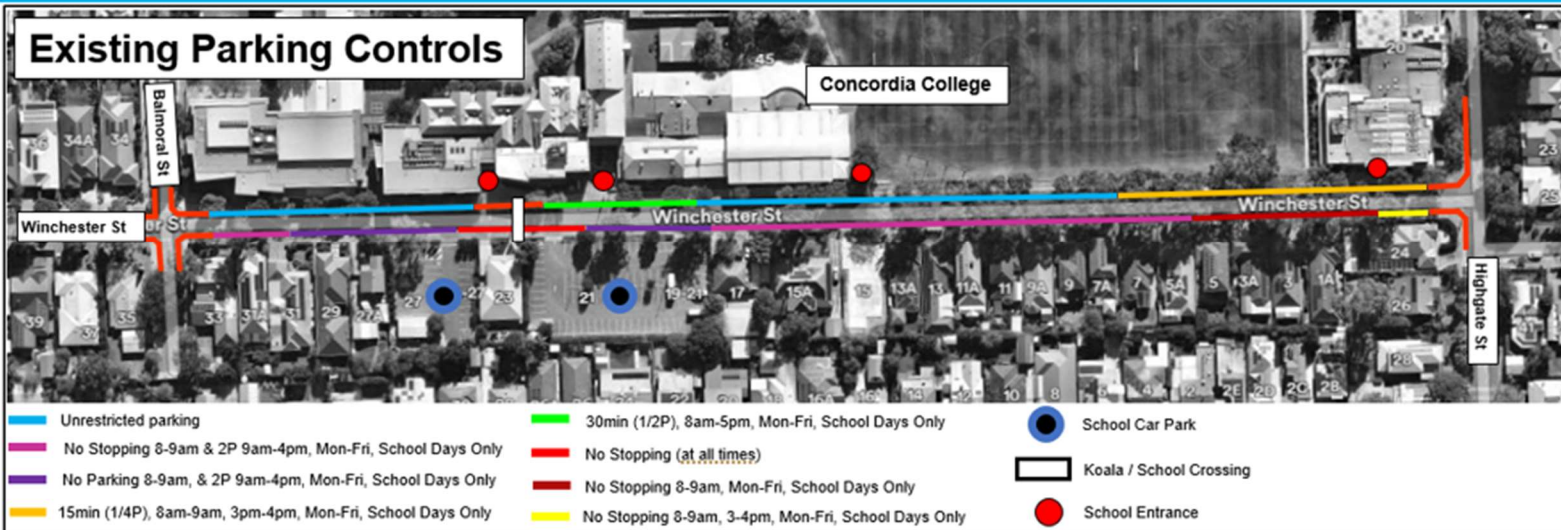
Install a new 'No Parking – Kiss and Drop' zone operating from 8:00 – 9:00 AM and 3:00 – 4:00 PM, school days only, to provide a safer and more efficient area for student drop-off and pick-up at the senior campus.

1C: Modify Existing Part-time No Stopping Zone

Change the existing part time No Stopping zone (8:00 AM – 4:00 PM, Monday to Friday) to a full-time No Stopping zone (24/7) to ensure safe access for bus / large vehicles at all times.

WINCHESTER STREET – New Parking Controls

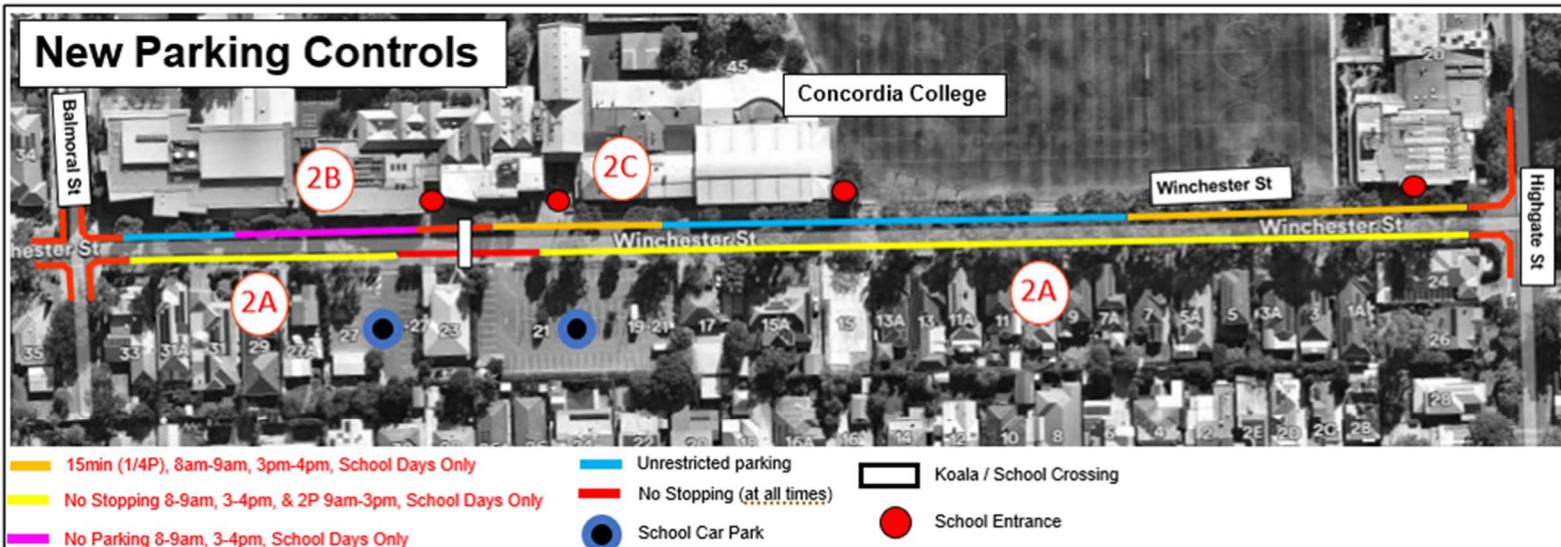
Existing Parking Controls



Key issues observed:

- Inconsistent parking restrictions** around the school create confusion for motorists, parents, and guardians, leading to high levels of non-compliant parking.
- Extensive areas of unrestricted parking** surrounding the school, are used for all-day parking, limiting availability for safe school drop-off's and pick-up's.
- Winchester Street experiences significant congestion**, particularly during the afternoon peak, due to parking on both sides of the road. This results in unsafe driving behaviours.
- Due to the school's high reliance on vehicle transport, **nearly all on-street parking on Highgate, Winchester, Balmoral, and Cheltenham Streets are fully occupied** during the PM peak period.

New Parking Controls



2A: Install School Peak Hour No Stopping and Time-Limited Parking Controls

Introduce a new parking control on the southern side of Winchester Street with the following restrictions:

- No Stopping: 8:00 – 9:00 AM and 3:00 – 4:00 PM, school days only
- 2P Parking: 9:00 AM – 3:00 PM, school days only

These changes aim to reduce congestion, improve traffic flow during school peak hours, and provide more consistent parking regulations along the street

2B: Install new 'Kiss and Drop' Zone

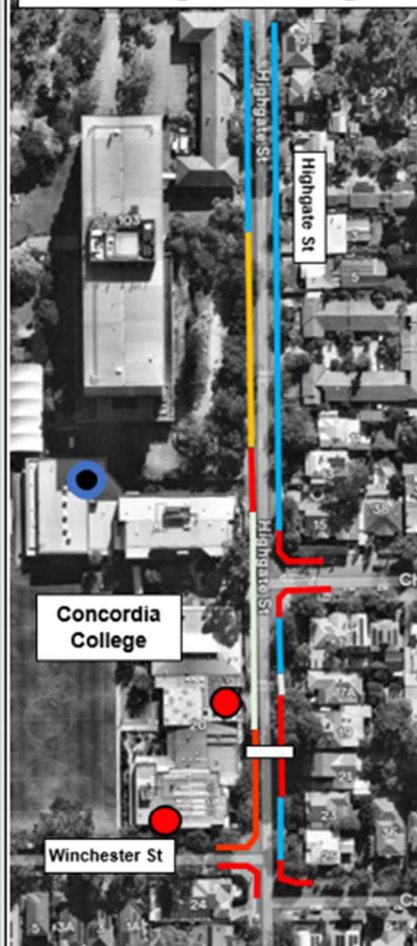
Install a 'No Parking – Kiss and Drop' zone operating from 8:00 – 9:00 AM and 3:00 – 4:00 PM, school days only, to enhance safety and efficiency for student drop-off and pick-up at the senior campus.

2C: Install 1/4P (15 min) Control

Install new short term "15 minute" parking zones operating from 8:00 – 9:00 AM and 3:00 – 4:00 PM, school days only, to support short-term parking needs for pick-up and drop-off near the senior campus, improving turnover and access during peak times.

HIGHGATE STREET – New Parking Controls

Existing Parking Controls

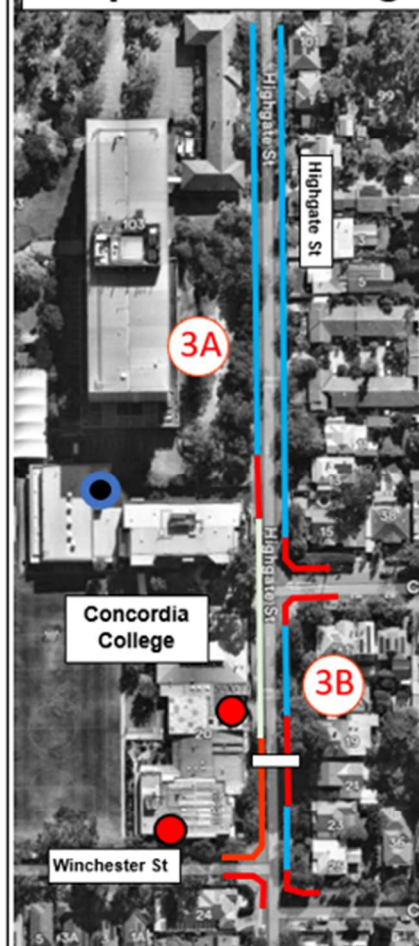


- No Stopping (at all times)
- Unrestricted parking
- 15min (1/4P), 8am-9am, 3pm-4pm, Mon-Fri, School Days Only
- No Parking 8-9am, 3-4pm & 1P 9am-3pm, School Days Only
- No Parking 8-9am, 3-4pm, School Days
- School Car Park
- Koala / School Crossing
- School Entrance

Key issues observed:

- **Extensive areas of unrestricted parking** surrounding the school, are used for all-day parking, limiting availability for safe school drop-offs and pick-ups.
- **Parents begin arriving at the Junior Campus as early as 2:30 PM**, with all pick-up spaces typically full by 2:50 PM, leading to early and prolonged congestion before school end time.
- **The Kiss and Drop zone on Highgate Street (north of Winchester Street) is heavily used**, with vehicles often stopping illegally across the Koala Crossing and blocking through traffic.
- **Illegal parking within 10 metres of the Winchester St / Highgate St intersection** obstructs pedestrian pathways and traffic, creating unsafe conditions.
- There is a **general lack of compliance with 'No Parking' and 15-minute time-limited zones**, with many vehicles overstaying the permitted time.
- Due to the school's high reliance on vehicle transport, **nearly all on-street parking on Highgate, Winchester, Balmoral, and Cheltenham Streets are fully occupied** during the PM peak period.

Proposed Parking Controls



- No Stopping (at all times)
- Unrestricted parking
- No Parking 8-9am, 3-4pm & 1P 9am-3pm, School Days Only
- School Car Park
- Koala / School Crossing
- School Entrance

3A: Remove Temporary 1/4P (15 min) Control

Remove the "Temporary" 1/4P (15 minute) zone that was installed in front of the Julia Farr building to assist Concordia during the recent construction project and reinstate to unrestricted parking (noting upcoming development of site).

3B: Remove single Kiss and Drop space

Remove the single "Kiss and Drop" space on the eastern 'residential' side of Highgate Street, as it is an inappropriate location to be dropping or picking up children from the Junior Campus.

THE CITY of
Unley



- Recommended Route from north / north-east to new pick up and drop off zone.

— Recommended Route from south / south-east to new pick up and drop off zone.

■ Recommended Route from south-west to new pick up and drop off zone.

Recommended Route from west / north-west to new pick up and drop off zone.

— New Pick up and Drop Off Zones